

Full insight – Transparency in injection moulding

ErgoTTY is the practical software tool for the acquisition, documentation, analysis, and backup of process data on Sumitomo (SHI) Demag injection moulding machines.

Recording PDA statistics

- Up to 10 items of the process data acquisition (PDA) system on Sumitomo (SHI) Demag machines with NC4 controller can be directly recorded over an extended period of time on the fixed disc of a PC.

Ideal traceability

- For reliable data checking and archiving, date and clock time are optionally recorded cycle by cycle with the process data – also in the ASCII format.

Simple backup

- All data can be stored simply and conveniently for extended periods of archiving on any kind of data media. There is no need for archiving on paper.

Easy evaluation

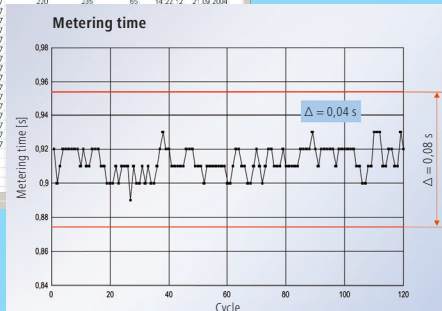
- Process data can be imported and evaluated in a simple way in commercial spreadsheet programs (e.g. Microsoft Excel®).

Detailed data material

- In addition to the PDA data it is possible, if desired, to transmit and store the associated pictures from the IBED or Ergocontrol display – e.g. temperature profiles or machine settings.



	E	F	G	H	I	J	K	L	M	
1	Masse	Dosenen	Schnecke	Umschalt	Zylinder1	Dosen	Heizung	EF	Zeit	Datum
2	postler	Skp	Zufuhr	weg	zone 1					
3	1,83	14,34	30,7	6,77	230	235	65	14.22.04	21.09.2004	
4	1,83	14,34	30,7	6,77	230	235	65	14.22.04	21.09.2004	
5	1,83	14,34	30,7	6,77	230	235	65	14.22.12	21.09.2004	
6	1,83	14,34	30,7	6,77	230	235	65	14.22.04	21.09.2004	
7	1,83	14,34	30,7	6,77	230	235	65	14.22.04	21.09.2004	
8	1,83	14,34	30,7	6,77	230	235	65	14.22.04	21.09.2004	
9	1,83	14,34	30,7	6,77	230	235	65	14.22.04	21.09.2004	
10	1,83	14,34	30,7	6,77	230	235	65	14.22.04	21.09.2004	
11	1,83	14,34	30,7	6,77	230	235	65	14.22.04	21.09.2004	
12	1,83	14,34	30,7	6,77	230	235	65	14.22.04	21.09.2004	
13	1,83	14,34	30,7	6,77	230	235	65	14.22.04	21.09.2004	
14	1,83	14,34	30,7	6,77	230	235	65	14.22.04	21.09.2004	
15	1,83	14,34	30,7	6,77	230	235	65	14.22.04	21.09.2004	
16	1,83	14,34	30,7	6,77	230	235	65	14.22.04	21.09.2004	
17	1,83	14,34	30,7	6,77	230	235	65	14.22.04	21.09.2004	
18	1,83	14,34	30,7	6,77	230	235	65	14.22.04	21.09.2004	
19	1,83	14,34	30,7	6,77	230	235	65	14.22.04	21.09.2004	
20	1,83	14,34	30,7	6,77	230	235	65	14.22.12	21.09.2004	
21	1,83	14,34	30,7	6,77	230	235	65	14.22.12	21.09.2004	



Sumitomo
SHI **DEMAG**

ErgoTTY

Analyse production – document quality

EASE OF OPERATION MANIPULATION AND EVALUATION

Convincingly simple operation

- **Only a mouse click:**

To connect to Ergocontrol/IBED and instant display of process data after each cycle.

- **Absolutely secure:**

On failure of a connection, a file name will be automatically retrieved for data security.

- **Practical use of graphs:**

Pictures from Ergocontrol/IBED are individually stored and sent as GIF files by e-mail.

- **User-efficient flexibility:**

Optional backup of date and time of recorded values.

- **Quick data assessment:**

Information on process stability by calculating min/max values, average values, and absolute deviation.

Evaluation – straightforward step by step

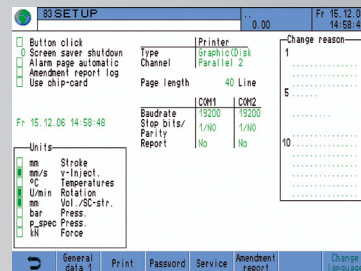
The process data are stored as standard as a TXT file which can be transferred to commercial spreadsheet programs. A convenient import assistant (e. g. Microsoft Excel®) eliminates the need for extensive defaults or additional working steps. Subsequently, the data can be stored as spreadsheet files (e. g. in Excel format). The stored pictures are optionally available as GIF or BMP files.

Requirements on Sumitomo (SHI) Demag machine

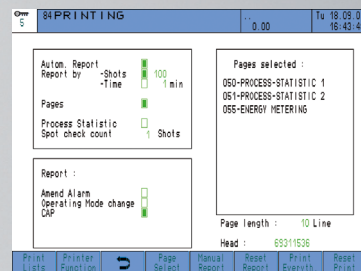
- ZE 420 process statistics
- ZE 460 or ZE 790 printer program
- NC4 controller with Ergocontrol or IBED

Requirements for notebook/PC

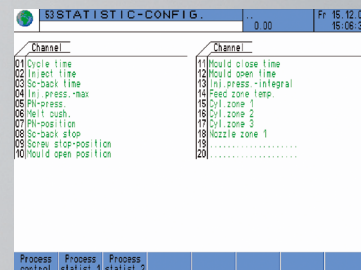
- Serial interface (normally available)
- Operating system Windows® 98 and higher
- Serial cable



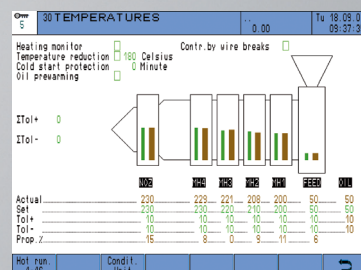
Setup and settings on IBED



Setting of report properties



Selection of a maximum of 10 values to be documented



Downloads of a 30 day test version are available at the service area of our website:
www.sumitomo-shi-demag.eu

Sumitomo (SHI) Demag Plastics Machinery GmbH
Altdorfer Str. 15, 90571 Schwaig
Tel.: +49-9 11-50 61-0
Fax: +49-9 11-50 61-2 65
E-Mail: info-dpde@dpg.com
www.sumitomo-shi-demag.eu